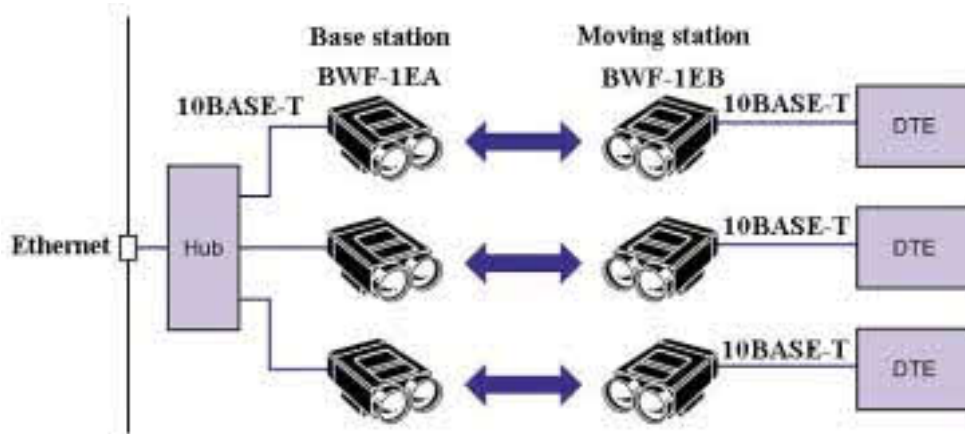
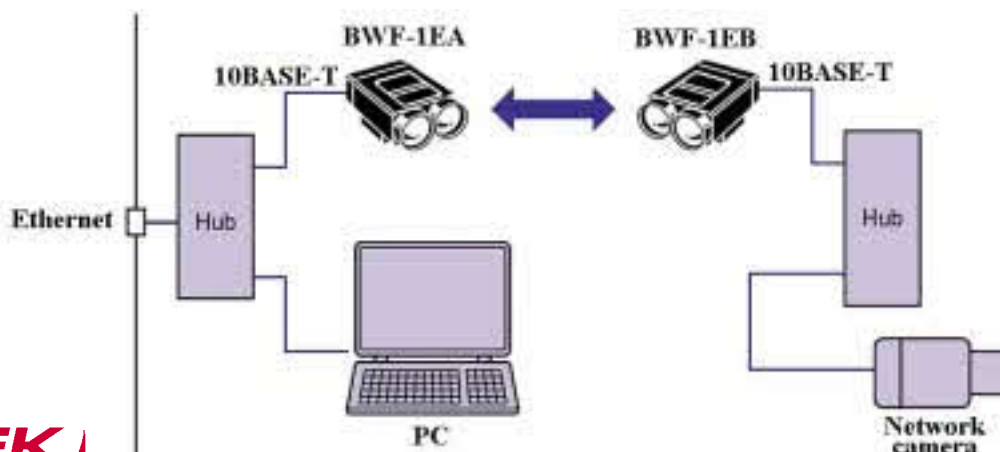


WIRELESS LAN IS REALIZED!

THIS IS A DATA TRANSMISSION DEVICE FOR ETHERNET THAT CAN MAKE WIRELESS LAN WITH INFRARED HIGH-SPEED DATA TRANSMISSION.

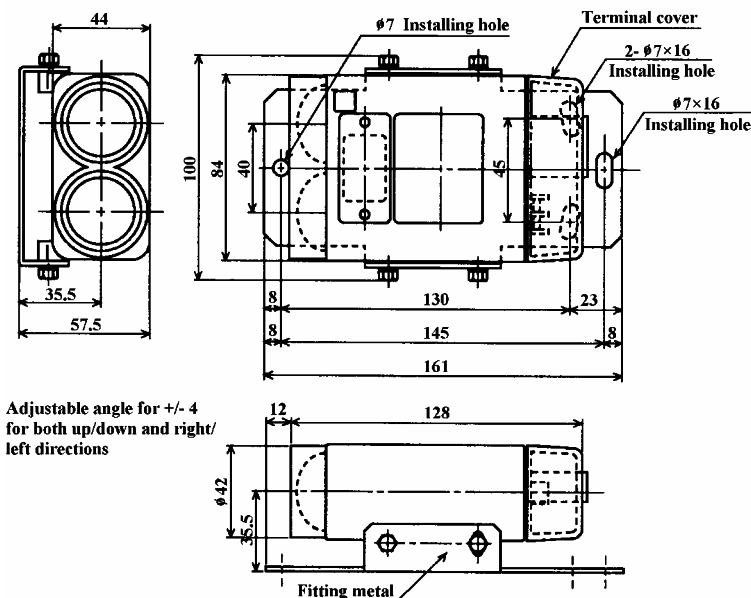
SOME PICTURES WHICH WAS CAPTURED BY NETWORK CAMERA CAN BE TRANSMITTED THROUGH ETHERNET.

**System structure
Example 1****Example 2**

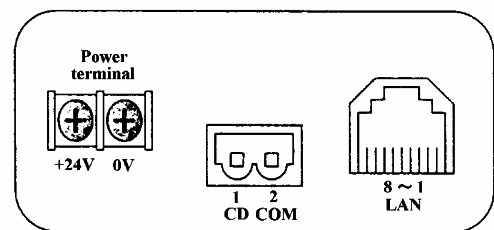
Specifications

Model No.	BWF-1EA		BWF-1EB	
Transmission distance	50m			
Directional angle	+/- 1 degree			
Transmission system	Full duplex two-way transmission			
Transmission speed	DC to 20Mbps			
Network	Connecting system	10BASE-T		
	Transmission speed	10Mbps or less		
	Connection	Modular jack(RJ-45 type)		
	Connecting system	Connector type(Terminal for DC power and FG)		
Modulating system	FKS modulation			
Modulating frequency	Transmission : 75MHz, Reception : 100MHz		Transmission : 100MHz, Reception : 75MHz	
Power source	24VDC(+/- 15%)			
Current consumption	130mA or less(when 24VDC)			
Indication lamps	PW : Power lamp, RUN : Normal inner LCA lamp, SD : Carrier output lamp (Optical transmission part), RD : Carrier input lamp(Optical transmission part) S C : Main station carrier detection lamp 1 : Main station light-reception level margin 1.5 times 2 : Main station light-reception level margin 2.0 times 3 : Main station light-reception level margin 2.5 times R C : Sub station carrier detection lamp 1 : Sub station light-reception level margin 1.5 times 2 : Sub station light-reception level margin 2.0 times 3 : Sub station light-reception level margin 2.5 times			
CD(Carrier detection) output	Photo-coupler(30V, 50mA or less), ON when carrier detection			
Ambient illuminance	Sun light/incandescent lamp : 10,000lux or less			
Ambient temperature/humidity	-10 to +50 degrees C, 85%RH or less(not icing)			
Case material/weight	ABS resin/approx. 500g			
Protective structure	IP40(IEC standard)			

External dimension



Connection



Connector for CD(2 pins)		
1	CD	
2	COM	
Connector for LAN(8 pins) : RJ-45		
1	TD+	Transmission data(+)
2	TD-	Transmission data(-)
3	RD+	Reception data(+)
4		Not used
5		Not used
6	RD-	Reception data(-)
7		Not used
8		Not used